

**English:**

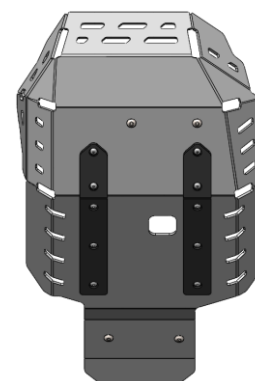
• **ATTENTION:** This engine guard is compatible with OEM Crash Bar.

**Français:**

• **ATTENTION:** Ce sabot moteur est compatible avec le Crash Bar OEM.

**Português:**

• **ATENÇÃO:** Esta proteção de motor é compatível com a Carenagem OEM.



**ALUMINUM TRAIL ENGINE GUARD**

Ref.: 2CP090080B



**Assembly Booklet / Paper collection**  
Livret de montage / Collecte de papier



**Mini Zip Bag / Plastic collection**  
Mini sac zip / Collecte de pastique



**Box / Paper collection**  
Boîte / Collecte de papier



**Carton Separator / Paper collection**  
Séparateur de cartons / Collecte de papier



**Card Header / Paper collection**  
Carte d'en-tête / Collecte de papier

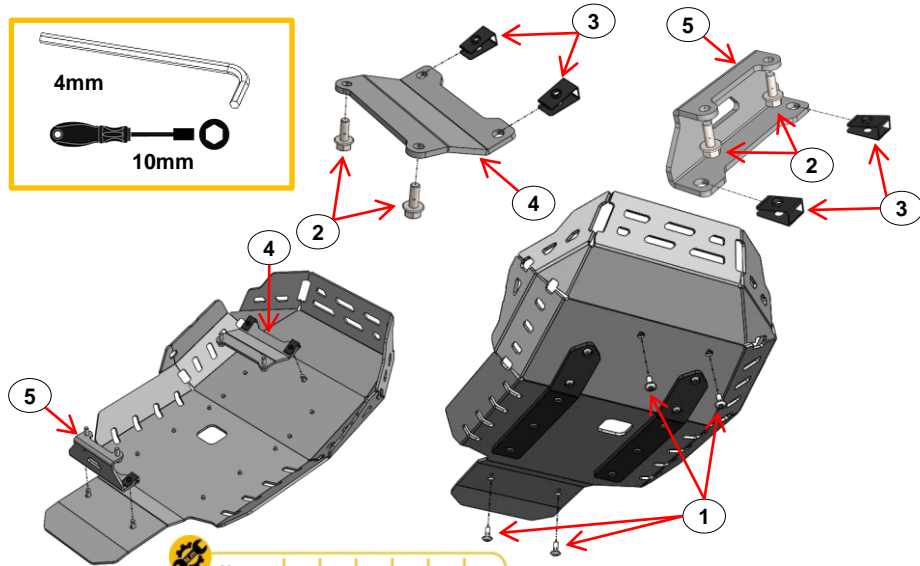
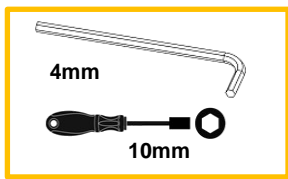


**Plastic Bag Cover / Plastic collection**  
Couverte de sac en plastique / Collecte de plastique



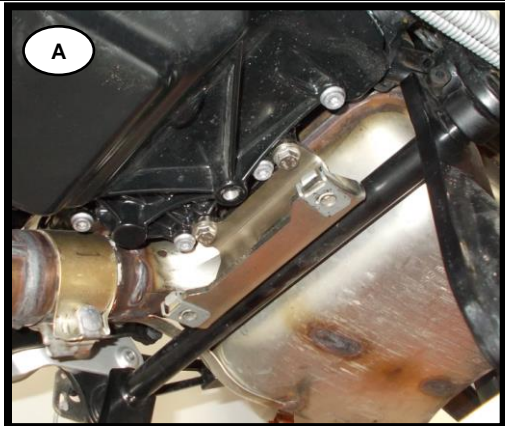
ID.022.02

## ASSEMBLY INSTRUCTION / INSTRUÇÃO DE MONTAGEM



	N.m	M4	M5	M6	M8	M10	M12
STEEL	8.8	2.7	5.5	9.7	23.0	47.0	80.0
STAINLESS STEEL	A2	2.6	5.1	8.7	21.2	42.0	73.0

5	Fixação Inox / Stainless Steel Clamp	R80	1
4	Fixação Inox / Stainless Steel Clamp	F80	1
3	Mola de Friso / Stainless Steel Clip	M6	4
2	Parafuso / Screw	M6x16 DIN6921 - A2	4
1	Parafuso com Falsa Anilha / Screw with Washer False	M6x16 ISO7380 - A2	4
ITEM Nº:	COMPONENTE (COMPONENT):	DESCRIÇÃO (DESCRIPTION):	QUANT.:
<b>ACESSÓRIOS (ACCESSORIES)</b>			



### English:

• Remove OEM protection. Apply item N°3 (Stainless Steel Clip – x2) on the item N°5 (Stainless Steel Clamp – x1) and apply on the rear part of the moto with item N°2 (Screw – x2).

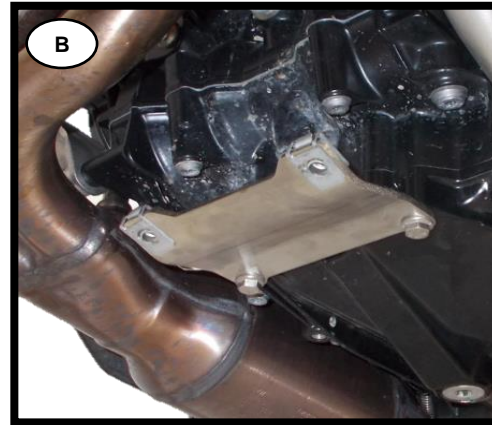
### Français:

• Retirer protection OEM. Appliquer l'item N°3 (Stainless Steel Clip – x2) sur le item N°5 (Fixation Inox – x1) et appliquer sur la partie arrière de la moto avec l'item N°2 (Vis – x2).

### Português:

• Remover proteção OEM. Aplicar o item N°3 (Mola de Friso – x2) no item N°5 (Fixação Inox – x1) e aplicar na parte de trás da moto com o item N°2 (Parafuso – x2).

## ALUMINUM TRAIL ENGINE GUARD



### English:

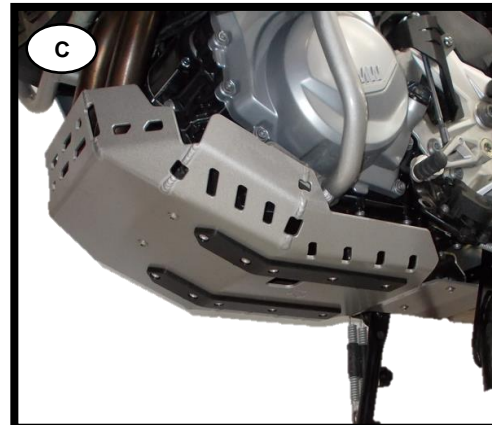
• Apply item N°3 (Stainless Steel Clip – x2) on the item N°4 (Stainless Steel Clamp – x1) and apply on the rear part of the moto with item N°2 (Screw – x2).

### Français:

• Appliquer l'item N°3 (Clip Inox – x2) sur le item N°4 (Fixation Inox – x1) et appliquer sur la partie arrière de la moto avec l'item N°2 (Vis – x2).

### Português:

• Aplicar o item N°3 (Mola de Friso – x2) no item N°4 (Fixação Inox – x1) e aplicar na parte de trás da moto com o item N°2 (Parafuso – x2).



### English:

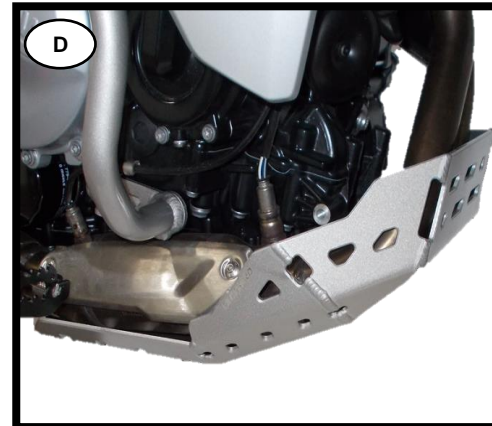
• Mount protection with item N°1 (Screw – x4).

### Français:

• Monter la protection avec l'item N°1 (Vis – x4).

### Português:

• Montar proteção com o item N°1 (Parafuso – x4).



### English:

• Torque all screws to the correct value.

### Français:

• Torque toutes les vis avec le bonne valeur.

### Português:

• Apertar todos os parafusos com o valor correto de torque.