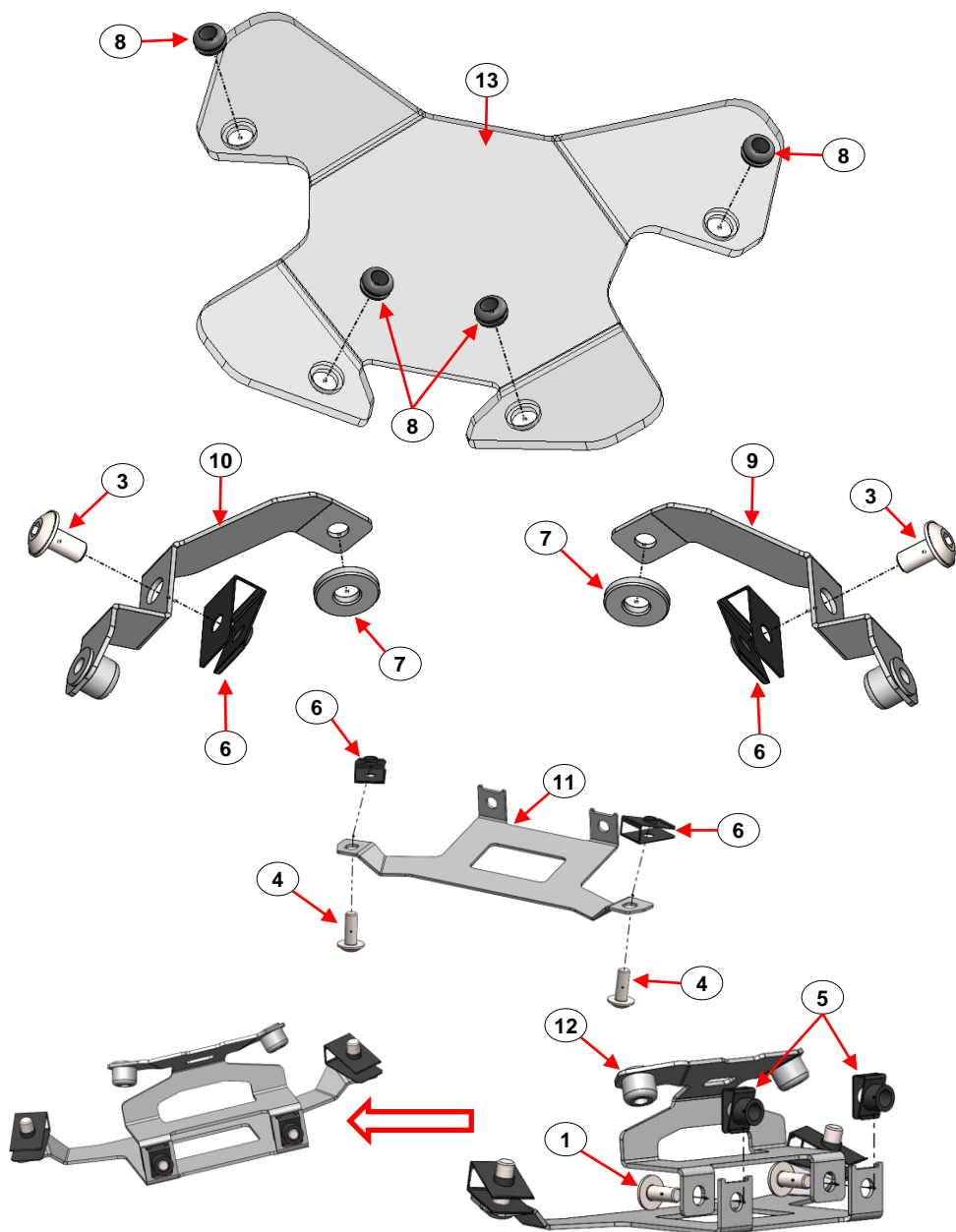


**HEAD LIGHT  
PROTECTOR TRANSPARENT**  
Ref.: 2CP2210098





**English:**

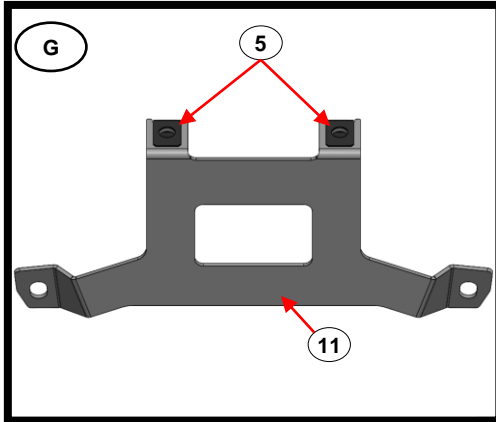
- Torque all screws to the correct value.

**Français:**

- Torque toutes les vis avec le bonne valeur.

**Português:**

- Apertar todos os parafusos com o valor correto de torque.



**English:**

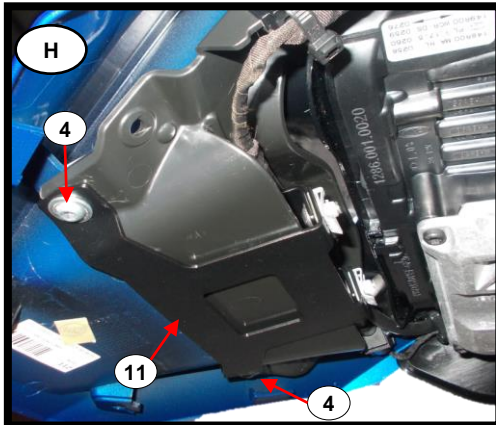
- Apply item N°5 (Stainless Steel Clip – x2) on the item N°11 (Stainless Steel Clamp – x1).

**Français:**

- Appliquer l'item N°5 (Clip Inox – x2) sur l'item N°11 (Fixation Inox – x1).

**Português:**

- Aplicar o item N°5 (Mola de Friso – x2) no item N°11 (Fixação Inox – x1).



**English:**

- Mount the assembly previously mounted on the motorcycle with item N°4 (Screw – x2).

**Français:**

- Monter assemblage précédemment monté sur la moto avec l'item N°4 (Vis – x2).

**Português:**

- Montar assemblagem anteriormente montada na moto com o item N°4 (Parafuso – x2).



**English:**

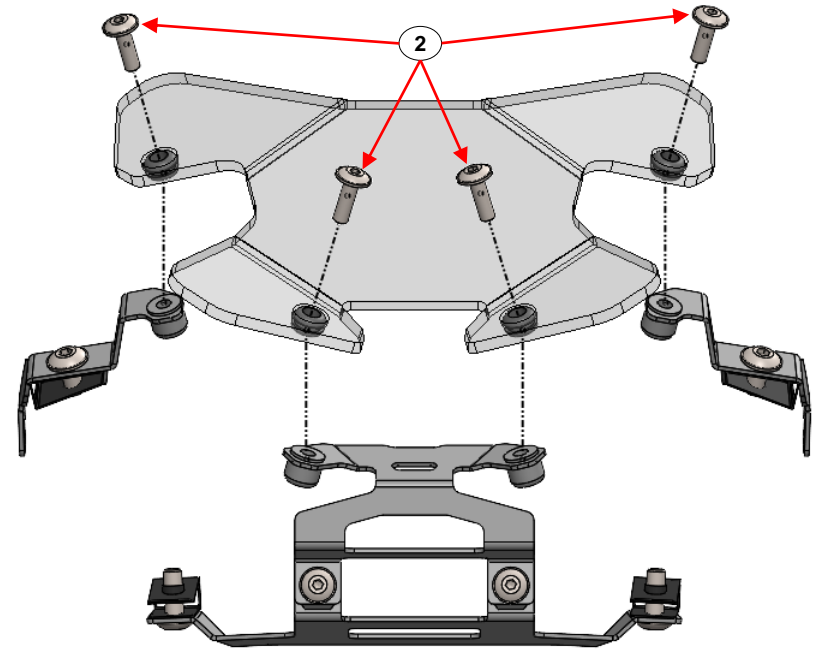
- Apply item N°13 (Polycarbonate Headlight Protector – x1) as marked in the photo.

**Français:**

- Appliquer l'item N°13 (Protecteur Phare Polycarbonate – x2) comme marqué sur la photo.

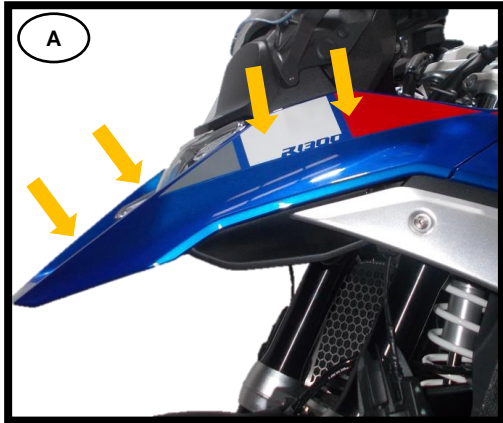
**Português:**

- Aplicar o item N°13 (Proteção Farol Policarbonato – x2) como marcado na foto.

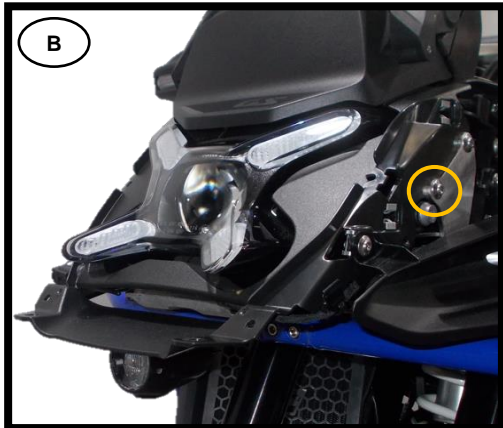


N.m	M4	M5	M6	M8	M10	M12
STEEL	8.8	2.7	5.5	9.7	23.0	47.0
STAINLESS STEEL	A2	2.6	5.1	8.7	21.2	42.0

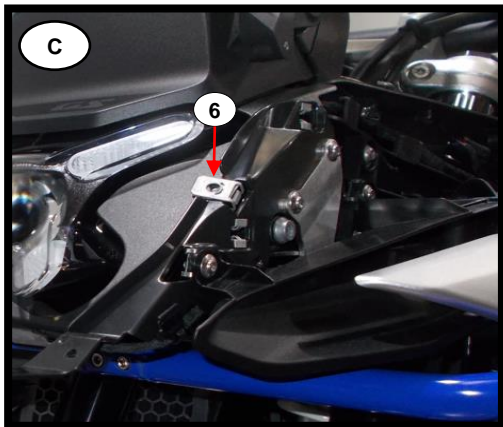
13	Prot. Farol Policarbonato / Polycarbonate Headlight Protector	98	1
12	Fixação Inox / Stainless Steel Clamp	A180	1
11	Fixação Inox / Stainless Steel Clamp	180	1
10	Fixação Inox / Stainless Steel Clamp	R179	1
9	Fixação Inox / Stainless Steel Clamp	L179	1
8	Anilha Especial Borracha / Special Rubber Washer	REF.: 05616632 005 25	4
7	Casquilho Alumínio / Aluminum Bushing	Ø18xØ7x3mm	2
6	Mola de Friso / Stainless Steel Clip	M6	4
5	Mola de Friso / Stainless Steel Clip	M5	2
4	Paraf. Cabeça Redonda Sext. Int. c. FA / Screw Round Head With Washer False	M6x16 - ISO 7380	2
3	Paraf. Cabeça Redonda Sext. Int. c. FA / Screw Round Head With Washer False	M6x12 - ISO 7380	2
2	Paraf. Cabeça Redonda Sext. Int. c. FA / Screw Round Head With Washer False	M5x16 - ISO 7380	4
1	Paraf. Cabeça Redonda Sext. Int. c. FA / Screw Round Head With Washer False	M5x12 - ISO 7380	2
ITEM N°:	COMPONENTE (COMPONENT):	DESCRIÇÃO (DESCRIPTION):	QUANT.:
ACESSÓRIOS (ACCESSORIES)			



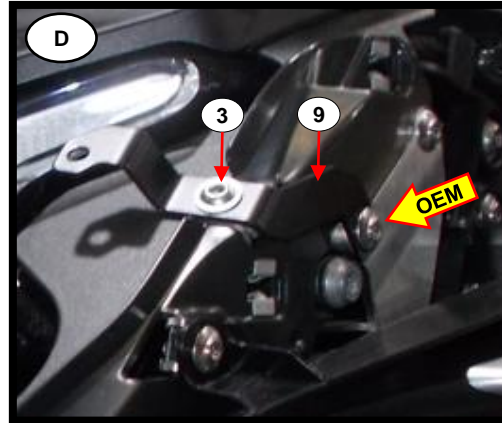
- English:**  
 • Remove OEM plastic.  
**Français:**  
 • Retirer le plastic OEM.  
**Português:**  
 • Retirar plástico OEM.



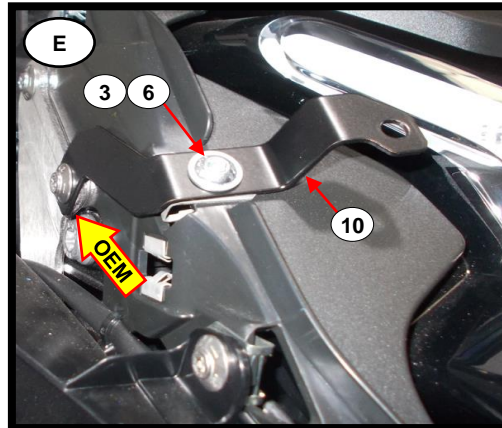
- English:**  
 • Remove OEM screw (1x) marked in the photo.  
**Français:**  
 • Retirer le vis (1x) OEM marquée sur la photo.  
**Português:**  
 • Remover parafuso (1x) OEM marcado na foto.



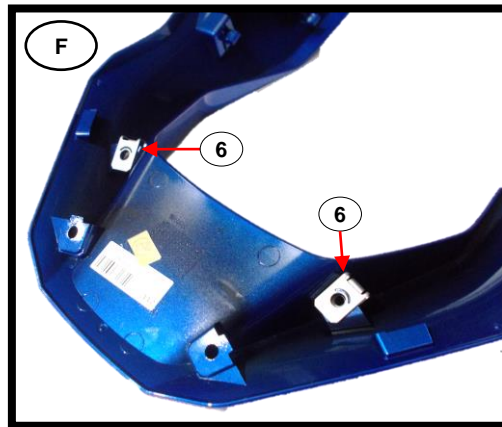
- English:**  
 • Apply item N°6 (Stainless Steel Clip – x1) as marked in the photo.  
**Français:**  
 • Appliquer l'item N°6 (Clip Inox – x1) comme indiqué sur la photo.  
**Português:**  
 • Aplicar o item N°6 (Mola de Friso – x1) como marcado na foto.



- English:**  
 • Apply item N°9 (Stainless Steel Clamp – x1) with item N°3 (Screw – x1) and OEM screw.  
**ATTENTION:** If the stainless steel mounting of the crash bar (from the same brand) is not mounted on the motorcycle, apply item N°7 (Aluminum Bushing – x1) to fill it.  
**Français:**  
 • Appliquer l'item N°9 (Fixation Inox – x1) avec l'item N°3 (Vis – x1) et vis OEM.  
**ATTENTION:** Si le fixation inox de la barre de protection (de la même marque) n'est pas monté sur la moto, appliquer l'item N°7 (Douille en Aluminium – x1) pour le remplir.  
**Português:**  
 • Aplicar o item N°9 (Fixação Inox – x1) com o item N°3 (Parafuso – x1) e parafuso OEM.  
**ATENÇÃO:** Caso a fixação inox do crash bar (da mesma marca) não esteja montado na moto, aplicar o item N°7 (Casquilho Alumínio – x1) para dar enchimento.



- English:**  
 • Repeat the process to the right side for item N°10 (Stainless Steel Clamp – x1).  
**Français:**  
 • Répétez le processus vers la droite pour l'item N°10 (Fixation Inox – x1).  
**Português:**  
 • Repetir o processo para o lado direito para o item N°10 (Fixação Inox – x1).



- English:**  
 • Remove OEM screws marked in the photo.  
**Français:**  
 • Remover les vis OEM marqué sur la photo.  
**Português:**  
 • Remover parafusos OEM assinalados na foto.