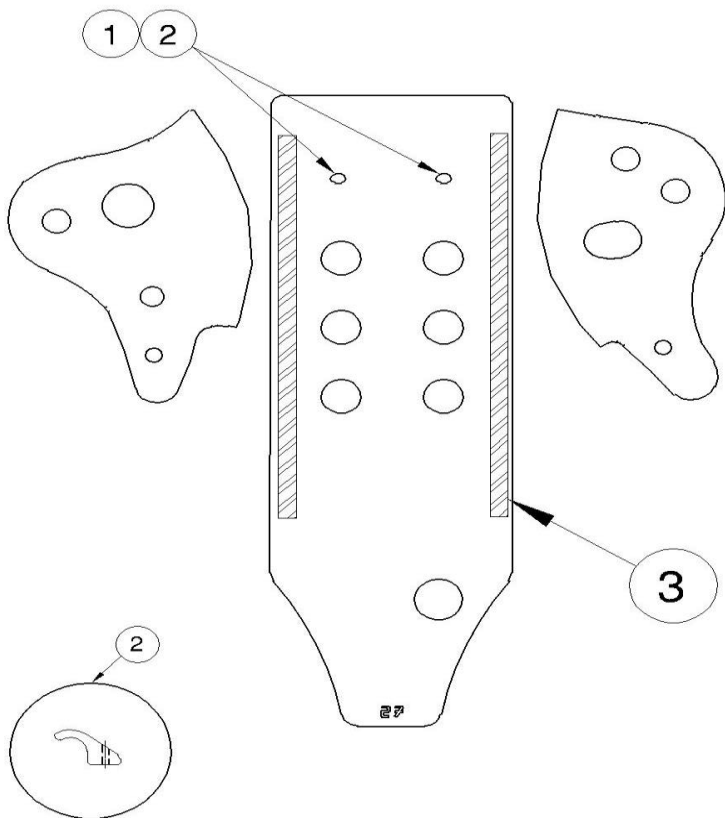


CROSSPRO
PROTECTION PARTS



Engine Guard AL-EC
KTM SXF 250 - 06 / EXC 250 4T - 07
Ref: 2CP0590027



ID.0113.01

3	-	PROTECTIVE STRIP	1 ml.	1
2	-	Aluminium Clamp	M6	2
1	-	Screw Button Head with washer false	M6x20	2
Item N°	Reference	Component	Description	Quant.

Assembly Sequence

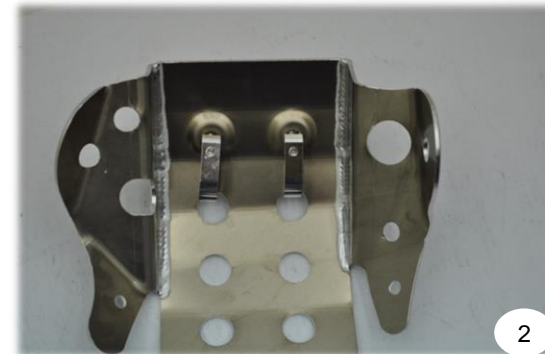
(1rd photo) Aluminum Engine protection part and kit of components. Apply strips on the insides of the central part of the protection in order to stay between the frame of the bike and the Aluminum protection

(2rd photo) On the front part of the protection apply Item N°2 (Clamp) using Item N°1 (Screws). Mount Protection on the motorcycle first rear parte

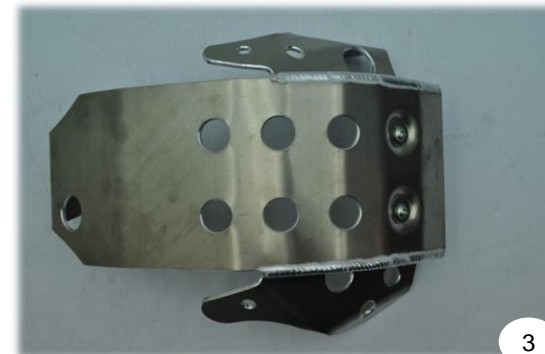
(3rd photo) Place in to position the front clamps Item N°3 previously mounted and adjust



1



2



3